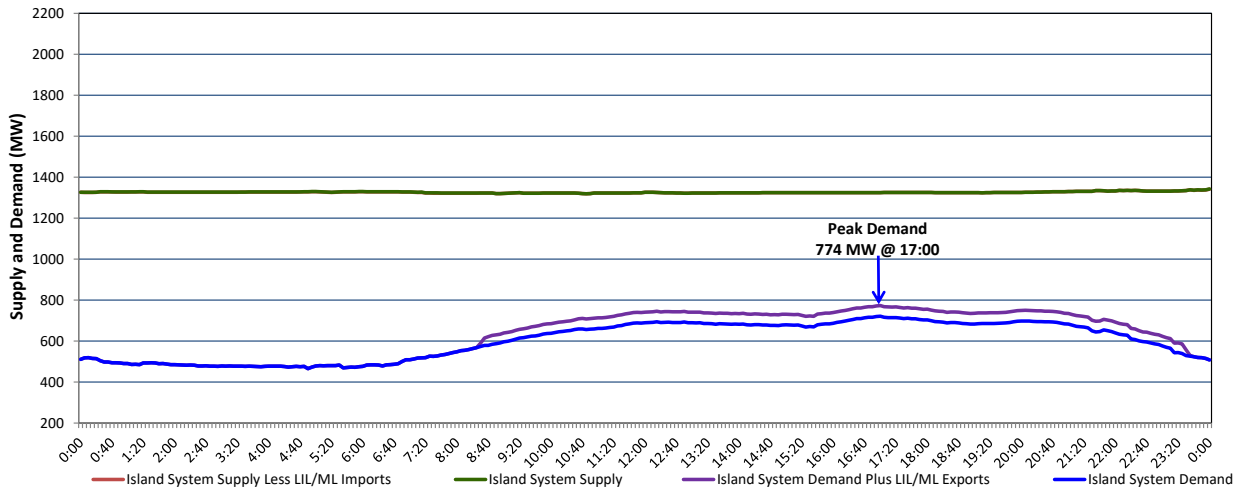


Newfoundland Labrador Hydro (NLH) Supply and Demand Status Report Filed Tuesday, September 06, 2022

Section 1 Island Interconnected System Supply, Demand & Exports Actual 24 Hour System Performance For Monday, September 05, 2022



Supply Notes For September 05, 2022

1,2

- A As of 1327 hours, May 08, 2022, Bay d'Espoir Unit 6 unavailable due to planned outage (76.5 MW).
- B As of 0800 hours, June 08, 2022, Holyrood Unit 1 unavailable due to planned outage (170 MW).
- C As of 0800 hours, July 31, 2022, Holyrood Unit 2 unavailable due to planned outage 150 MW (170 MW).
- D As of 0651 hours, August 22, 2022, Hinds Lake Unit unavailable due to planned outage (75 MW).
- E As of 0803 hours, September 01, 2022, Holyrood Unit 3 available but not operating (150 MW).

Section 2 Island Interconnected Supply and Demand

Tue, Sep 06, 2022	Island System Outlook ³		Seven-Day Forecast	Temperature (°C)		Island System Daily Peak Demand (MW)	
				Morning	Evening	Forecast	Adjusted ⁷
Available Island System Supply: ⁵	1,310	MW	Tuesday, September 6, 2022	14	12	840	840
NLH Island Generation: ^{4,8}	1,025	MW	Wednesday, September 7, 2022	13	12	790	790
NLH Island Power Purchases: ⁶	80	MW	Thursday, September 8, 2022	12	11	770	770
Other Island Generation:	205	MW	Friday, September 9, 2022	11	13	745	745
ML/LIL Imports:	-	MW	Saturday, September 10, 2022	14	13	715	715
Current St. John's Temperature & Windchill:	14 °C	N/A	Sunday, September 11, 2022	14	12	720	720
7-Day Island Peak Demand Forecast:	840	MW	Monday, September 12, 2022	15	18	755	755

Supply Notes For September 06, 2022

3

F At 0728 hours, September 06, 2022, Stephenville Gas Turbine available at 25 MW (50 MW).

- Notes:
1. Generation outages for running and corrective maintenance are included. These are not unusual for power system operations. They generally do not impact customer supply. The power system operators schedule outages to system equipment whenever possible to coincide with periods when customer demands are low and sufficient supply reserves are available. However, from time to time equipment outages are necessary and reserves may be impacted.
 2. Due to the Island system having no synchronous connections to the larger North American grid, when there is a sudden loss of large generating units there may be a requirement for some customer's load to be interrupted for short periods to bring generation output equal to customer demand. This automatic action of power system protection, referred to as under frequency load shedding (UFLS), is necessary to ensure the integrity and reliability of system equipment. Under frequency events have typically occurred 5 to 8 times per year on the Island Interconnected System and the resultant customer load interruptions are generally less than 30 minutes. With the activation of the Maritime Link frequency controller during the winter of 2018, UFLS events have occurred less frequently.
 3. As of 0800 Hours.
 4. Gross output including station service at Holyrood (24.5 MW) and improved NLH hydraulic output due to water levels (35 MW).
 5. Gross output from all Island sources (including Note 4).
 6. NLH Island Power Purchases include: CBPP Co-Gen, Nalcor Exploits, Rattle Brook, Star Lake, Wind Generation and capacity assistance (when applicable).
 7. Adjusted for curtailable load, market activities and the impact of voltage reduction when applicable.
 8. Due to limitations inherent in the design of combustion turbines, the output of combustion turbines may be reduced in the event that ambient temperatures exceed the threshold

Section 3 Island Peak Demand Information Previous Day Actual Peak and Current Day Forecast Peak

Mon, Sep 05, 2022	Actual Island Peak Demand ⁹	17:00	774 MW
Tue, Sep 06, 2022	Forecast Island Peak Demand		840 MW

Notes: 9. Island Demand / LIL / ML Exports (where applicable) is supplied by NLH generation and purchases, plus generation owned and operated by Newfoundland Power and Corner Brook Pulp & Paper (Deer Lake Power, DLP).